

Quick Reference Guide

– FL180

Description

The FL180 is a stable and flexible floor lift that can be used in all types of lifting situations. It allows lifting from high surfaces, such as a chair, bed, wheelchair or commode, in addition to lifting from the floor. Easy to maneuver and transport, store and set up, the FL180 has everything you need in a floor lift. Its base can be adjusted electrically or manually for greater flexibility. The floor lift also has manual or electrical emergency lowering.



Part no:

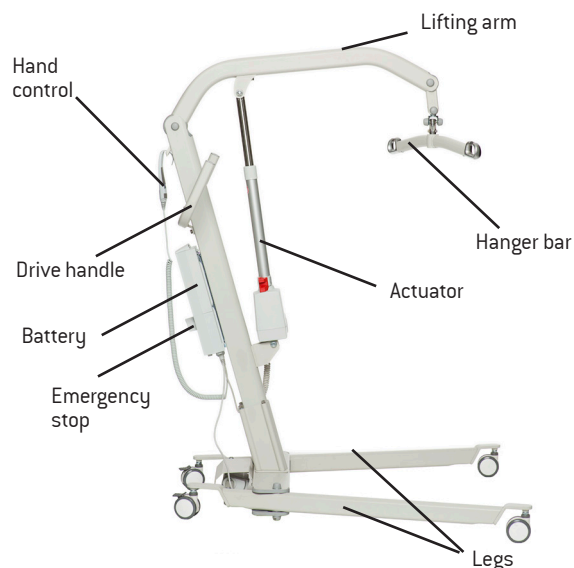
FL180 kit North America: 70967-NA

FL180 kit Australia: 70967-AU

FL180 kit Great Britain: 70967-GB

FL180 kit Japan: 70967-JP

FL180 kit Europe: 70967-EU



Using the lift

<p>Select and position sling around the patient according to sling instructions.</p> <p>Use hand control to position carry bar directly above the patient.</p>	<p>Attach the head sling loops to carry bar first, than leg straps to leg hooks.</p>	<p>Raise the patient (up on hand control) and as raises check to ensure straps are firmly in place. Raise the patient up until obstacles are clear, hold sling and position/move patient as needed.</p>	<p>Lower patient (down on hand control) until in desired position. Continue to lower until all straps are slack to remove</p>

Helpful Troubleshooting Tips!

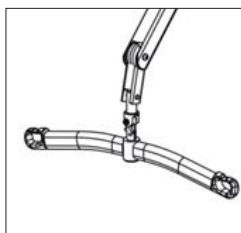
If lift is NOT working, make sure unit is unplugged but has charge and emergency stop button is not engaged.

Quick Reference Guide

– FL180

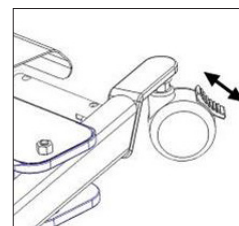
Hanger Bars

The FL180 is delivered with a 2-point hanger bar of 20" (50 cm). There is also optional hanger bars that can be ordered as accessories: 14" (37 cm) and 18,5" (47 cm). Secure sling on hook as supplied by instructions before lifting. Always double check security of loops.

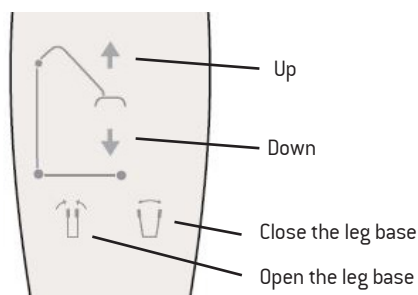


Braking and Casters

The lift has two braked castors. Castors should NOT be braked when lifting, only when loading and unloading



Hand Control

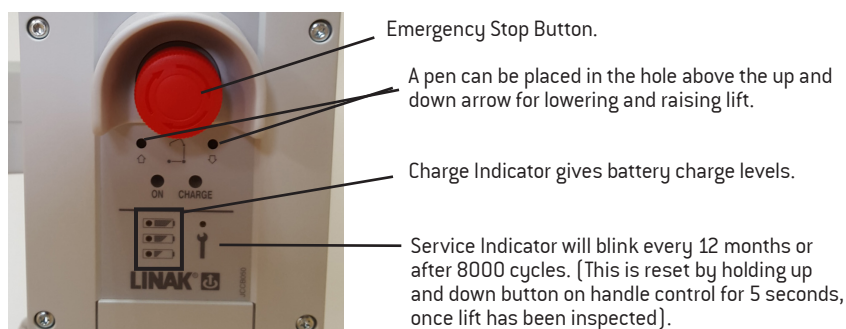


Emergency Lowering

To lower lift manually, slide red tab up. The lift arm will gradually lower (lift must be loaded with weight). To stop lowering, release the tab.



Display Panel and Lights



HUMAN CARE
Your Life. Your Way.

IMPORTANT! This quick reference guide does not replace the user manual which can be downloaded at www.humancaregroup.com

AUSTRALIA

Unit 9, 271 Wells Road
Chelsea Heights, Victoria 3196
Phone:- +61 3 8773 1111
Fax:- +61 3 9773 4008
Email: info.au@humancaregroup.com

CANADA

10-155 Colonnade Road
Ottawa, ON K2E 7K1
Phone:- 613.723.6734
Fax:- 613.723.1058
Email: info.ca@humancaregroup.com

SWEDEN

Årstaängsvägen 21C
117 43 Stockholm
Phone:- +46 8 665 35 00
Fax:- +46 8 665 35 10
Email: info.se@humancaregroup.com

UNITED STATES

4210 S. Industrial Drive, Suite 160
Austin, TX 78744
Phone:- 512.476.7199
Fax:- 512.476.7190
Email: info.us@humancaregroup.com